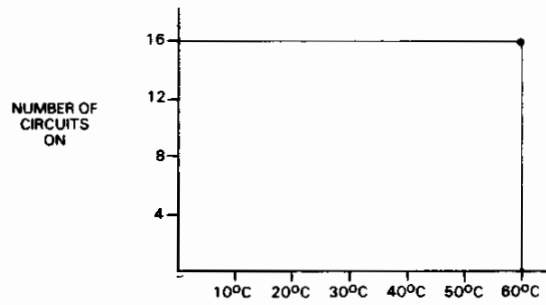


RELAY OUTPUT
IC630MDL380A

The Relay Output module provides 16 circuits, each capable of controlling user supplied discrete (ON/OFF) loads. Typical loads include relay coils, motor starters, solenoid valves, and indicator lights. Since this module is not designed for a specific current type such as 24 Vdc or 115 Vac, it can be used for a wide variety of loads and signal types. The 16 circuits are arranged in two groups of 8 circuits each. Each group is protected by a 10 amp fuse. Each group can be supplied from a separate power source. Power to operate the field devices must also be supplied by the user. Specifications for this module are listed below.

Output points	16 with LED Indicators
Contact Type	Normally Open (N.O.)
User Supplied * Voltage Current	5 - 265 Vac/dc maximum 4A continous
ON delay OFF delay	5 ms 5 ms
Contact protection	RC network (100 Ω , .015 μ f)
Leakage current of contacts	1.3 mA (230V, 60 Hz) due to surge protection circuit
Fuse Rating	10A (each 8 circuits)
Internal Power Consumption	5 Vdc, 35 mA 12 Vdc, 40 mA/point

*Since non-solid state devices are used for power switching, the limitations listed in Table 6.3 must be observed for reliable operation.



AMBIENT TEMPERATURE (°C)
I/O POINTS VS. TEMPERATURE CHART

PC-S3-83-0030

Table 6.3
LOAD CURRENT LIMITATIONS

Operating Voltage	Maximum Current for Load Type			Typical Contact Life (Number of Operations)
	Resistive	Lamp	Solenoid	
220 Vac	4 Amp	0.5 Amp	0.5 Amp	100,000
220 Vac		0.05 Amp	0.05 Amp	800,000
110 Vac	4 Amp	0.5 Amp	0.5 Amp	100,000
110 Vac		0.1 Amp	0.1 Amp	650,000
24 Vdc	4 Amp	0.5 Amp		100,000

NOTE

Lamp loads are defined as having a X10 inrush with a power factor (PF) of 1.00 and when turned OFF represent a PF of 1.00. Solenoids are defined as having a X10 inrush with a PF of 0.65 and when turned OFF represent a PF of 0.35.

Figure 6.13 provides wiring information for the Relay Output module.

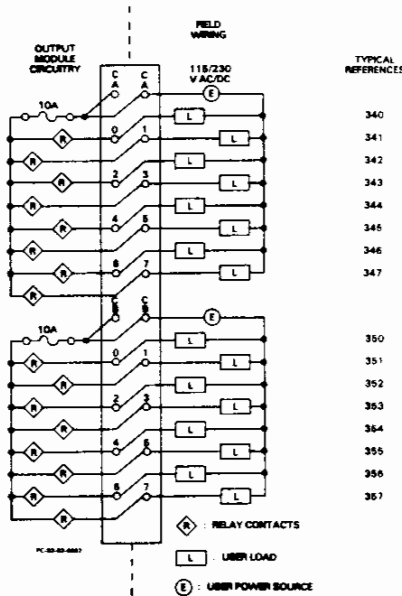


Figure 6.13
RELAY OUTPUT USER CONNECTIONS